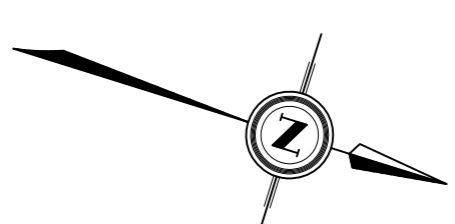


PLAN OF SURVEY WITH TOPOGRAPHY OF
**PART OF LOT 32
 CONCESSION B**
 CITY OF TORONTO
 (FORMERLY CITY OF SCARBOROUGH)

SCALE 1 : 500

SPEIGHT, VAN NOSTRAND & GIBSON LIMITED
 ONTARIO LAND SURVEYORS

THE REPRODUCTION, ALTERATION OR USE OF THIS PLAN, OR
 ANY PART THEREOF, WITHOUT THE WRITTEN PERMISSION OF
 SPEIGHT, VAN NOSTRAND & GIBSON LIMITED IS STRICTLY PROHIBITED.



ELEVATION NOTE
 ELEVATIONS ARE GEODETIC AND ARE DERIVED FROM THE CITY OF TORONTO
 BENCH MARK NO. WT 71
 LOCATION : SOUTH OF ST. CLAIR AVENUE EAST SIDE, IN WEST FACE
 OF ST. CLAIR AVENUE, 0.18 METRES NORTH OF WARDEN AVENUE
 CORNER AND 0.27 METRES ABOVE SIDEWALK.
 PUBLISHED ELEVATION = 147.957 metres.

BEARING NOTE
 BEARINGS HEREON ARE ASTRONOMIC AND ARE REFERRED TO THE EASTERLY
 LIMIT OF WARDEN AVENUE AS SHOWN ON PLAN 68R-24283
 HAVING A BEARING OF N17°00'00"W

LEGEND

■	DEPOSITS
—	SURVEY MONUMENT FOUND
—	WITNESS MONUMENT PLANTED
—	STANDARD IRON BAR
—	IRON BAR
—	CATCH BASIN
—	PIPE HYDRANT
—	GAS VALVE
—	OV
—	HAND WELL
—	WONKITE HYPRO POLE
—	WONKITE HYPRO POLE
—	CONCRETE LIGHT STANDARD
—	METAL LIGHT STANDARD
—	FLOOR FINISHER
—	BOLARD
—	SHARPE CONNECTION
—	PROPANE TORQUE SIGNAL
—	GAS METER
—	MONITORING WELL
—	HYDRO POLE
—	DECIDUOUS TREE
—	CONCRETE TREE
—	ELEVATION ON THE TOP OF WALL
—	CONCRETE
—	GRAVEL
—	BRICK
—	BRICK WALL
—	CONCRETE WALL

SURVEYOR'S CERTIFICATE

I CERTIFY THAT:
 1. THIS SURVEY AND PLAN ARE CORRECT AND IN ACCORDANCE WITH THE SURVEY ACT
 2. THE SURVEY WAS COMPLETED ON APRIL 6th, 2021

D. A. WILTON
 ONTARIO LAND SURVEYOR

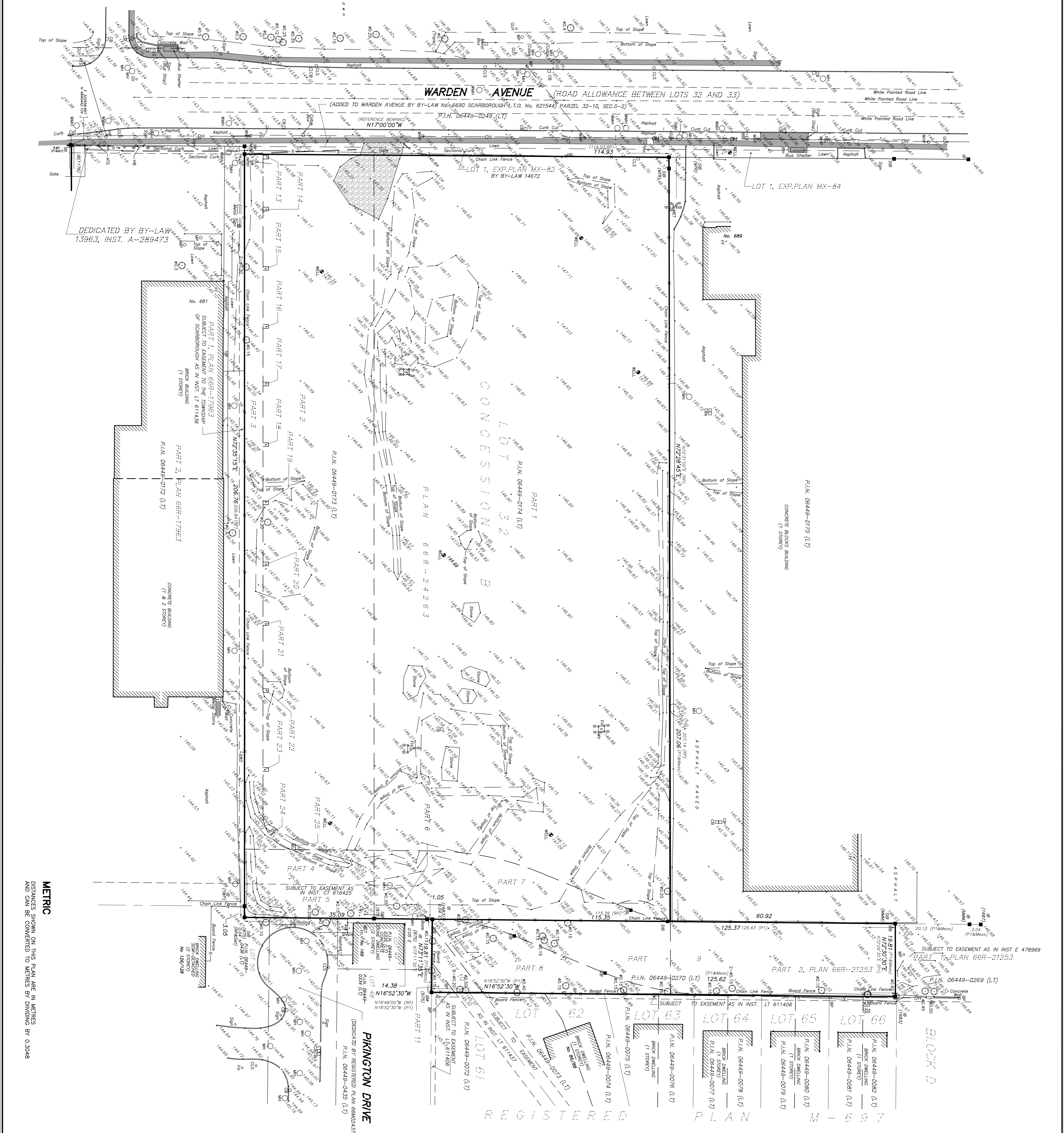
DATE: JUNE 24th, 2021

SPEIGHT, VAN NOSTRAND & GIBSON LIMITED
 ONTARIO LAND SURVEYORS

750 DUNDAS ROAD, UNIT 68 & 69
 TORONTO, ONTARIO M5G 1K5
 TEL: 416 749-5060 (TOLL FREE) FAX: 416 749-7866
 E-Mail: kvonko@svng.ca

DRAWN: F.P.B./M.M./D.G. FILE NAME: 22010075
 CHECKED: D. A. W. PLOT SCALE: MET. 1=0.50
 JOB No.: 201-0075 PLOTTED:
 REF. No.:

THIS PLAN IS NOT VALID
 UNLESS IT IS AN EMBOSSED
 ISSUED ORIGINAL COPY
 IN ACCORDANCE WITH
 REGULATION 1926, SECTION 4(3)



METRIC
 DISTANCES SHOWN ON THIS PLAN ARE IN METRES
 AND CAN BE CONVERTED TO METRES BY DIVIDING BY 0.3048